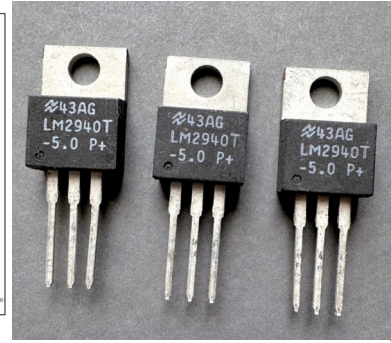
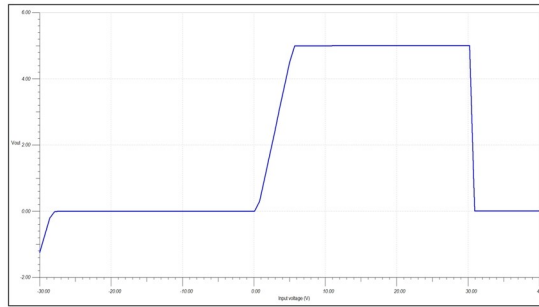
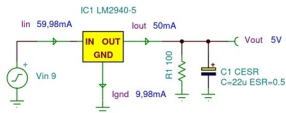
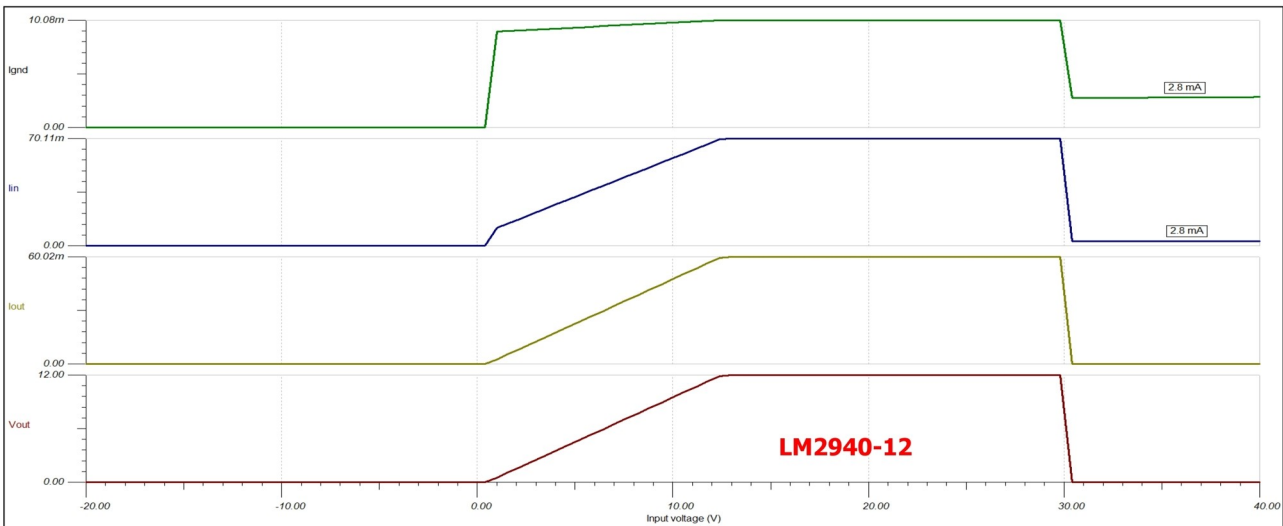
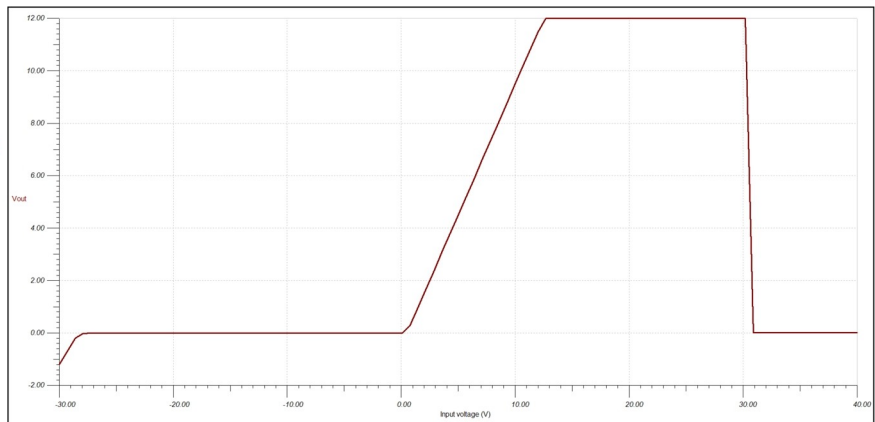
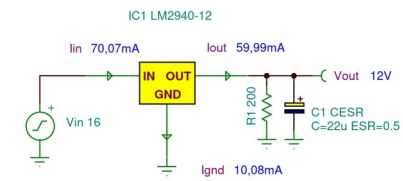
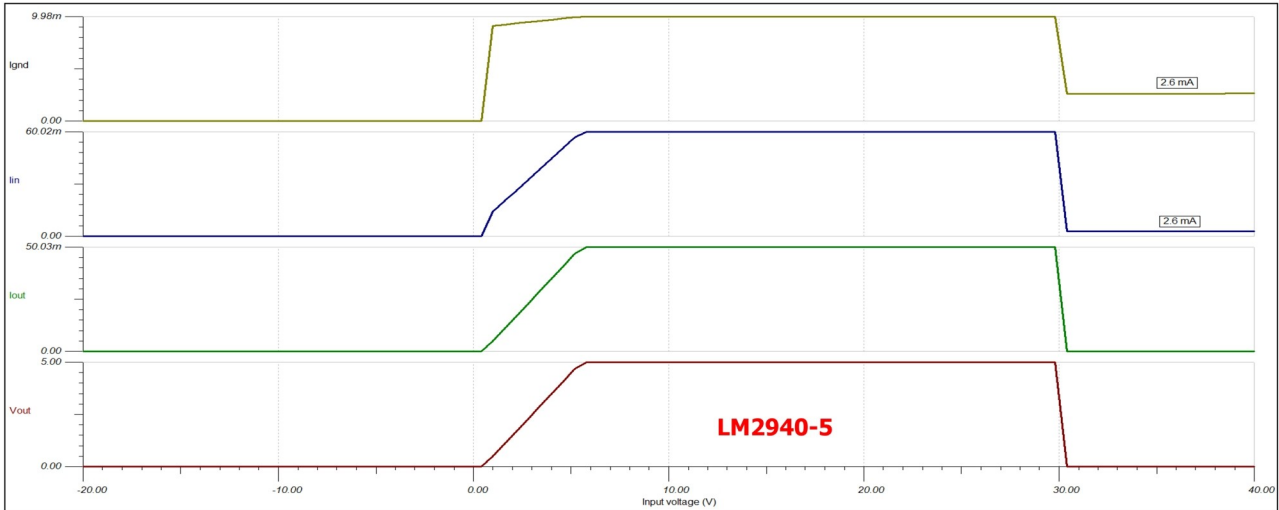


LM2940 Low Dropout Regulator Spice Model

DC Characteristics

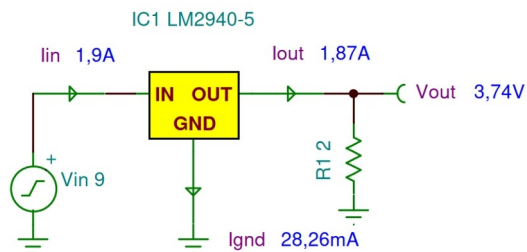


The LM2940 and all regulated circuitry are protected from reverse battery installations or 2-battery jumps. During line transients, such as load dump when the input voltage can momentarily exceed the specified maximum operating voltage, the regulator will automatically shut down to protect both the internal circuits and the load.

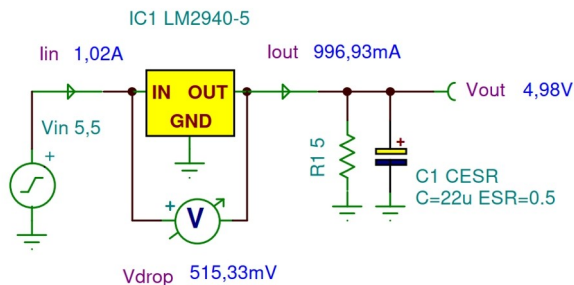


The **LM2940** and all regulated circuitry are protected from reverse battery installations or 2-battery jumps. During line transients, such as load dump when the input voltage can momentarily exceed the specified maximum operating voltage, the regulator will automatically shut down to protect both the internal circuits and the load.

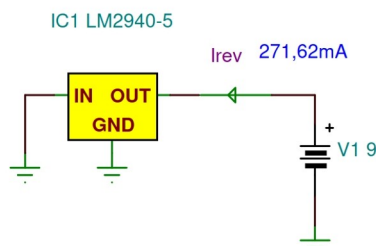
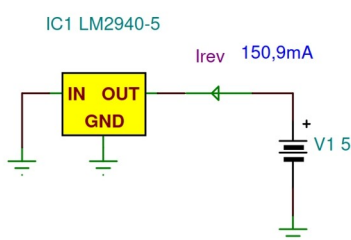
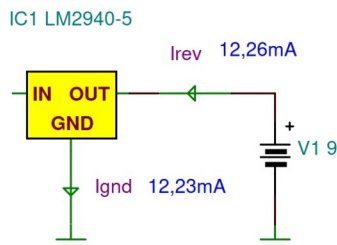
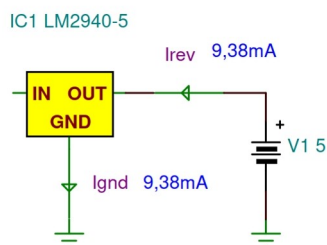
Internal short circuit current limit



Dropout voltage



Mirror image insertion protection



Load transient response

