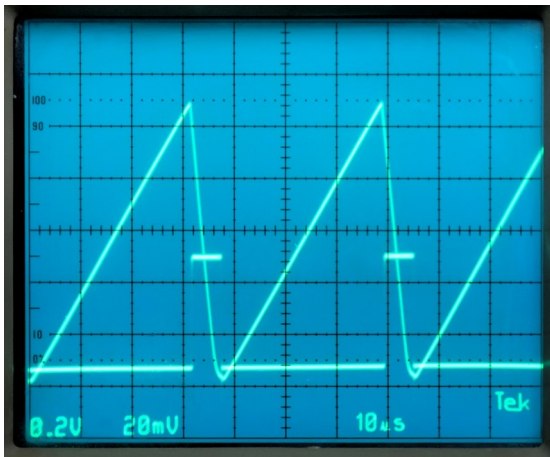
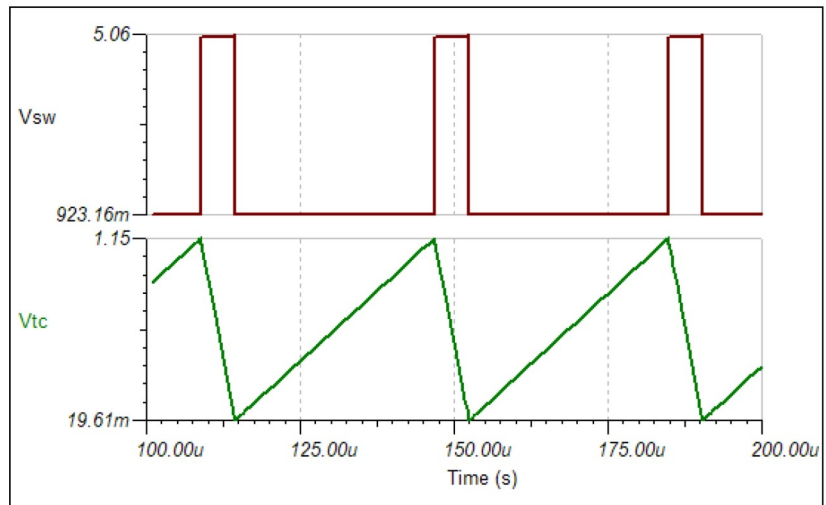
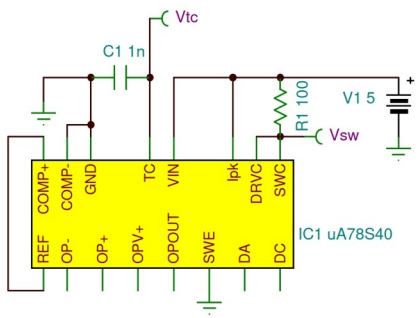


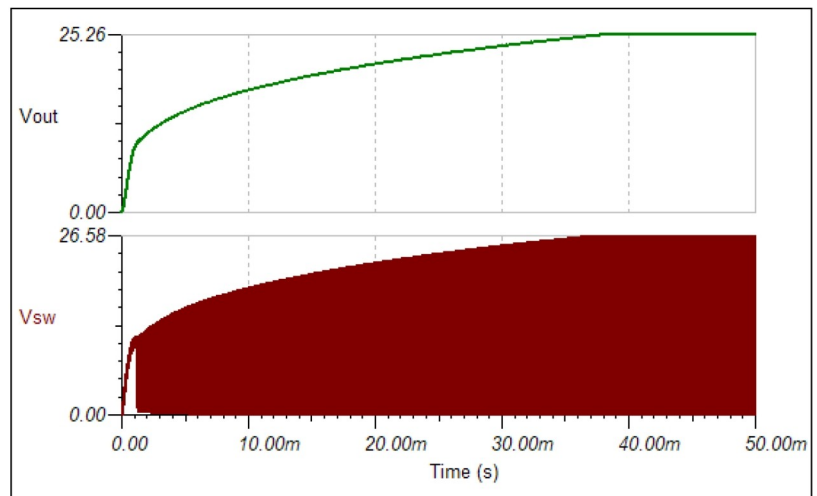
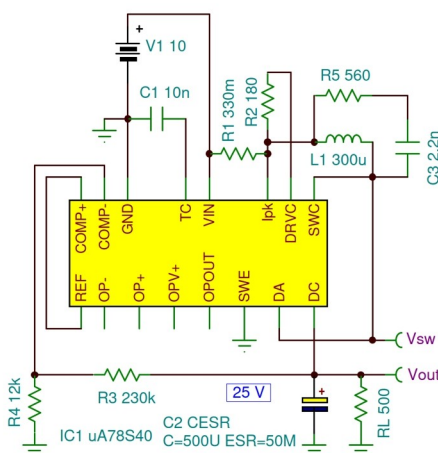
μA78S40 Switching Regulator Macro Model

AC Test Circuit

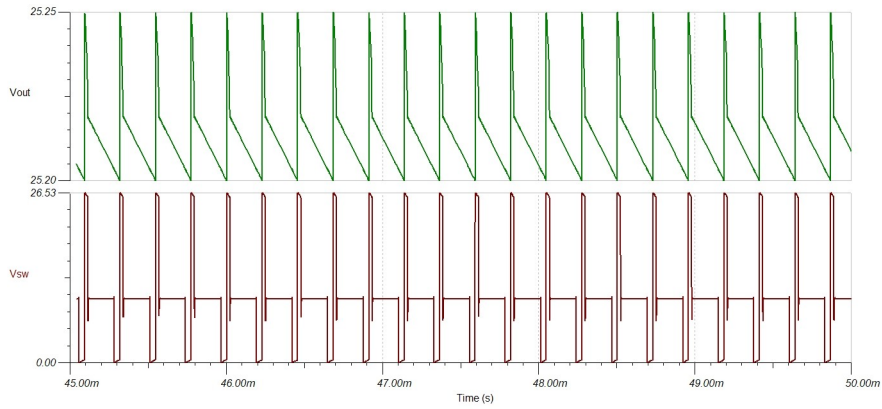


The μA78S40 is identical to the MC34063 with the addition of an on-board power catch diode, and an uncommitted operational amplifier.

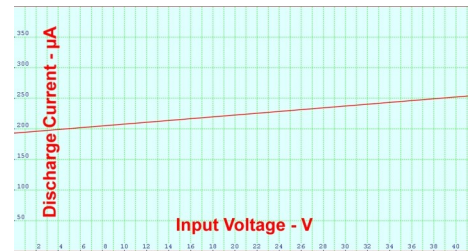
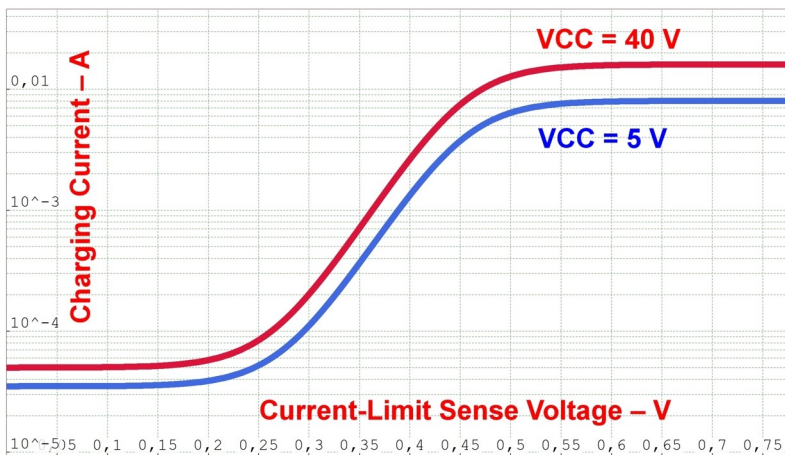
Step-Up Switching Regulator Example



Step-Up Switching Regulator Waveforms

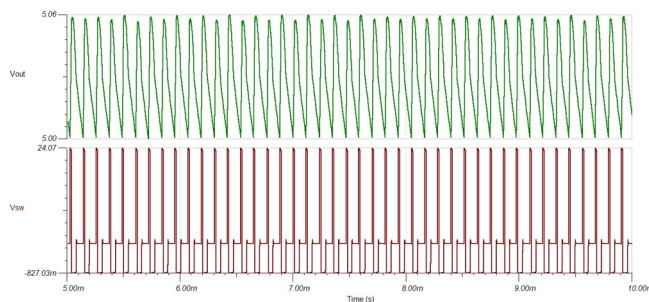
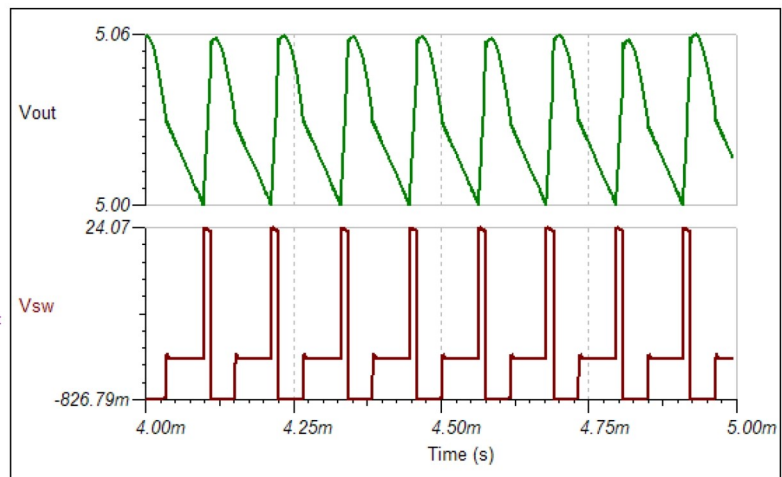
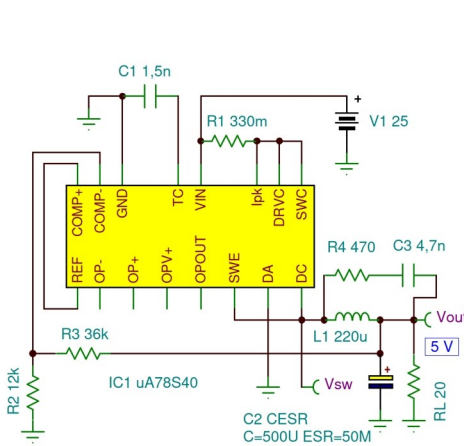


Timing Capacitor Charge Current vs Current-Limit Sense Voltage

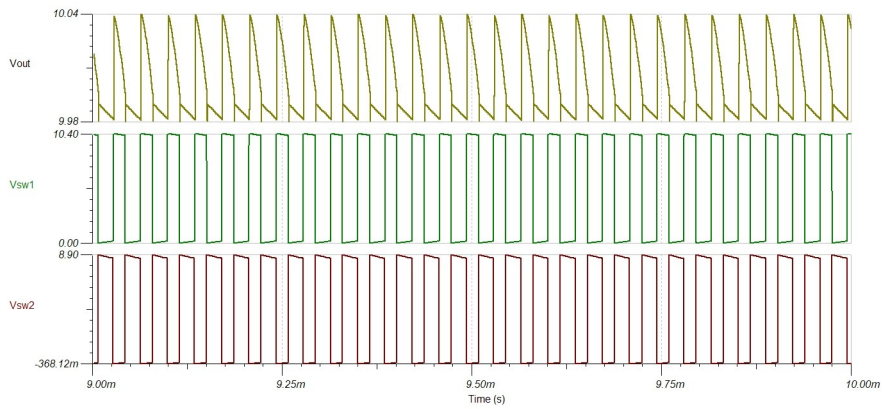
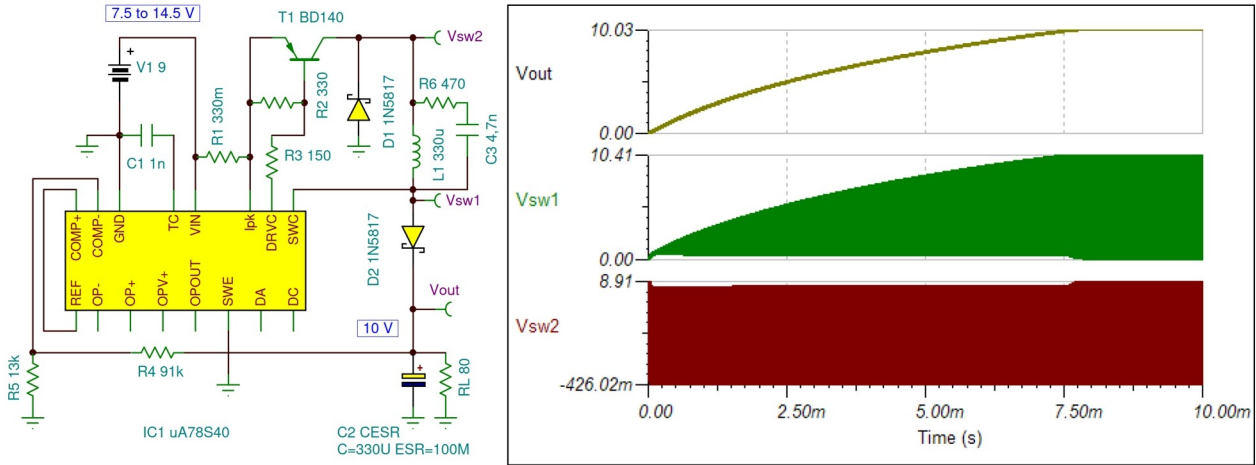


The typical charge current is 35 μA , and the typical discharge current is 200 μA . (VCC = 5 V)

Step-Down Switching Regulator Example



Step-Up/Down Switching Regulator Example



Step-Down with Linear Pass from Main Output

