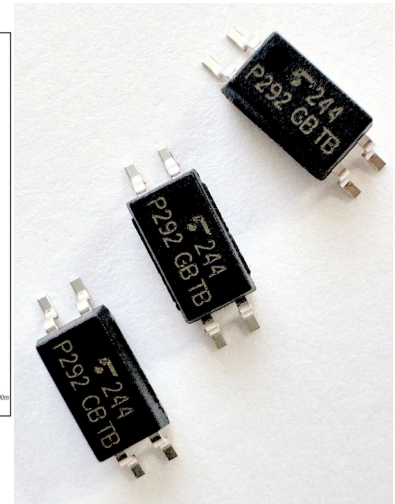
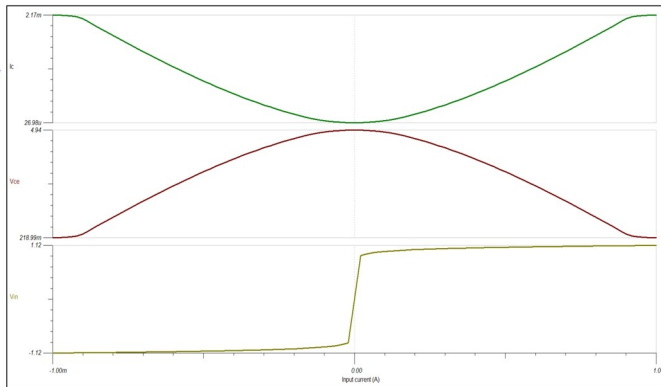
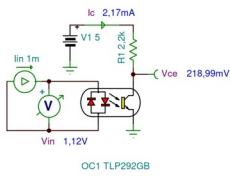


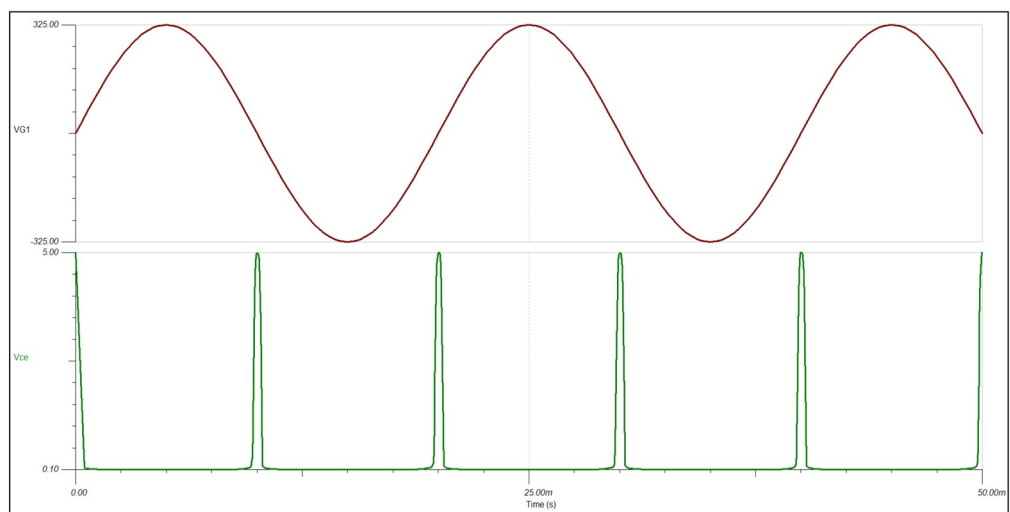
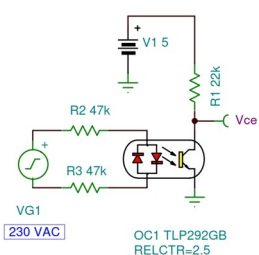
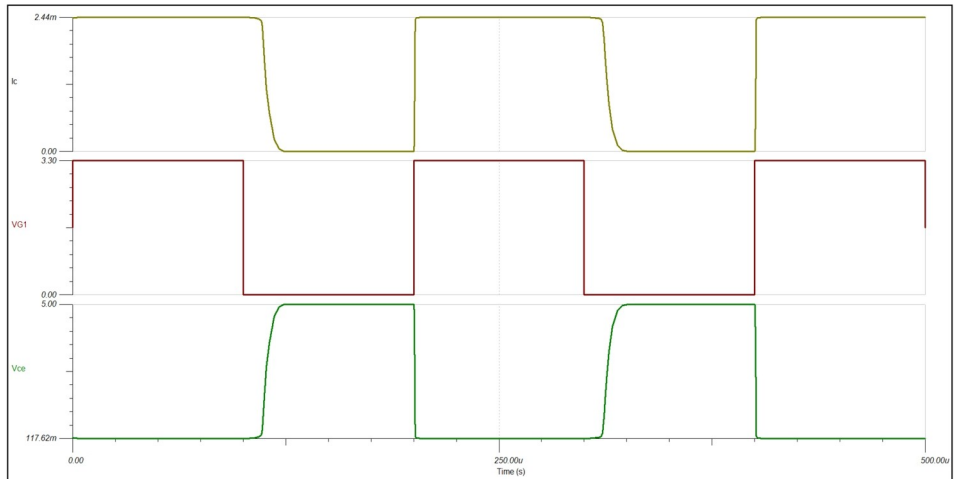
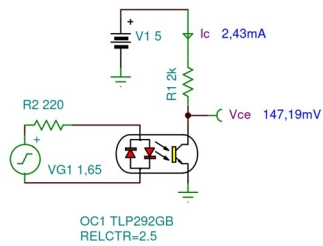
TLP292 Optocouplers, Phototransistor Output, AC Input

DC Characteristics



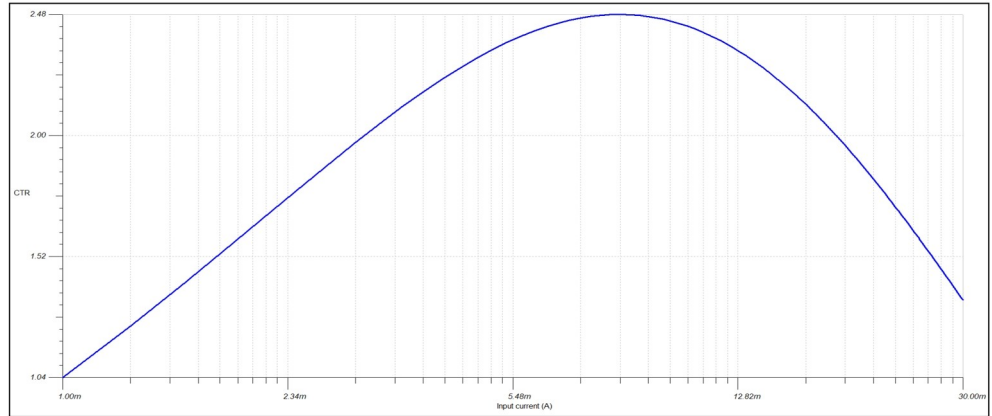
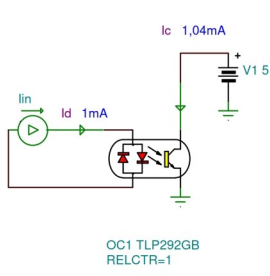
TLP292 is a low AC input type photocoupler that consists of phototransistor optically coupled to two antiparallel infrared LEDs in a SO4 package.

Electro-optical Characteristics



Typical values are for information only and are not part of the testing requirements. TLP292 is designed for applications requiring detection or monitoring of AC signals.

Current Transfer Ratio vs. Forward Current



Collector Current vs. Collector-emitter Voltage

