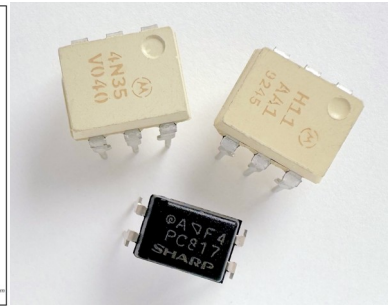
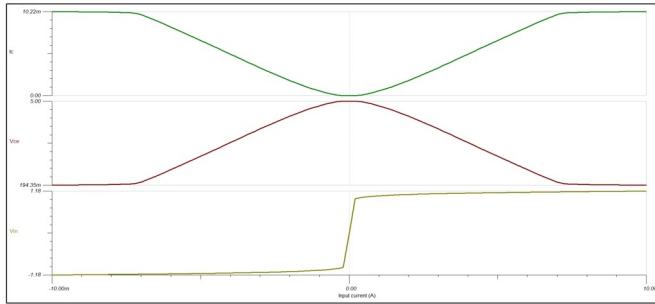
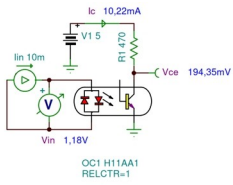


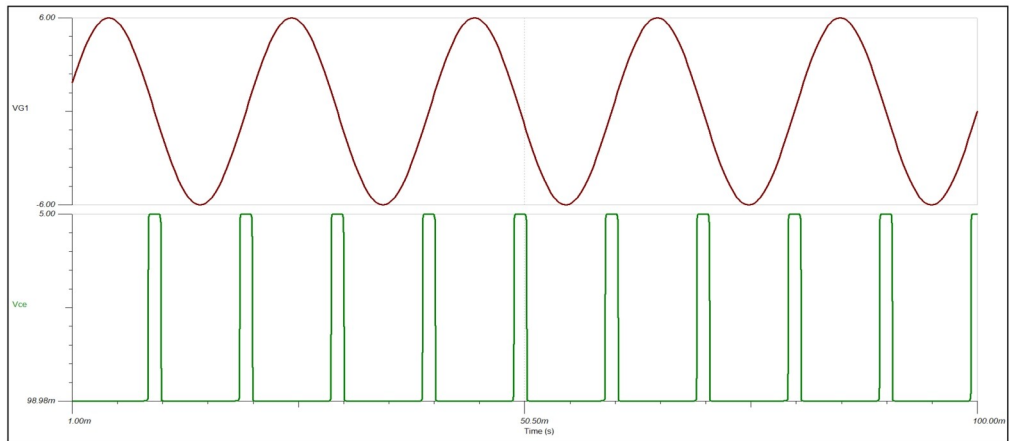
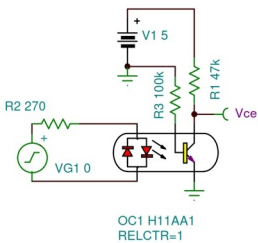
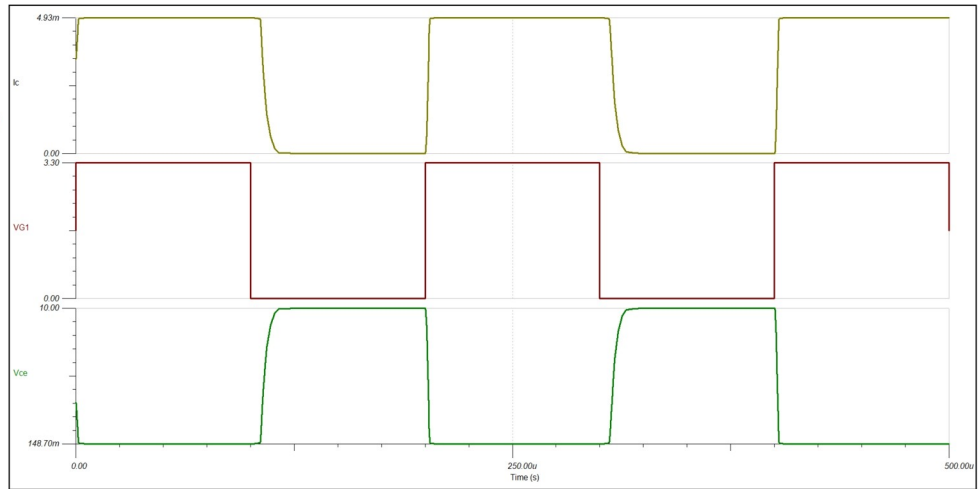
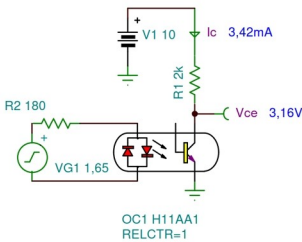
4N35, H11AA1, PC817

Optocouplers, Phototransistor Output, AC/DC Input

H11AA1 DC Characteristics

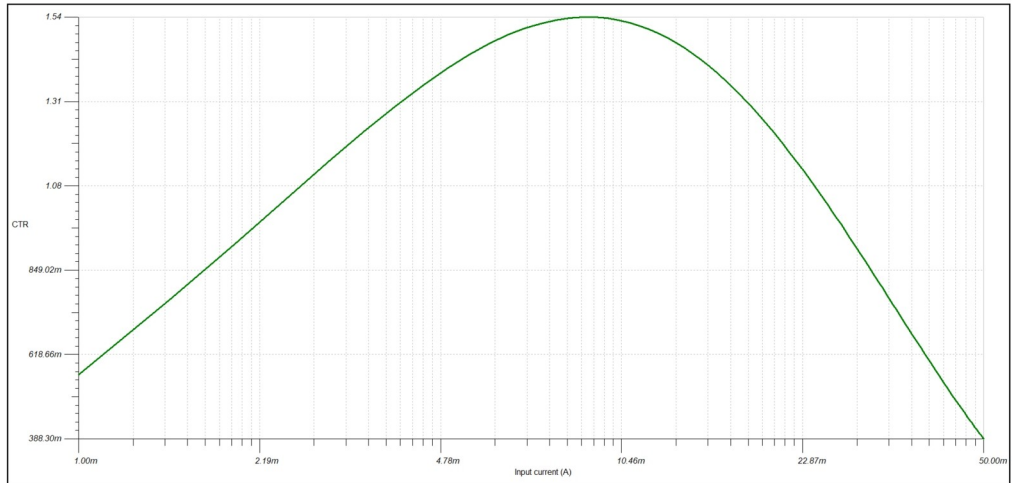
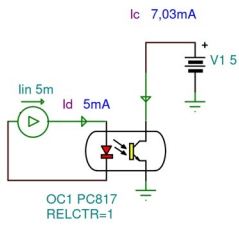


H11AA1 Electro-optical Characteristics

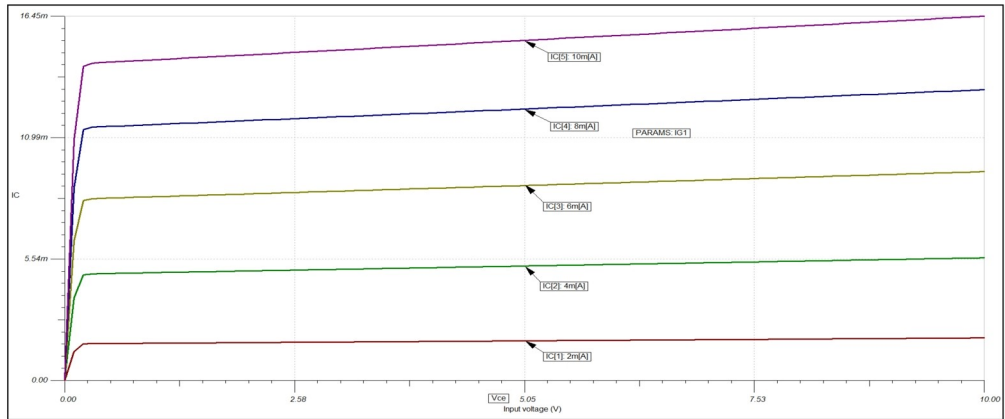
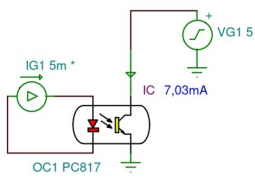


Typical values are for information only and are not part of the testing requirements. H11AA1 is designed for applications requiring detection or monitoring of AC signals.

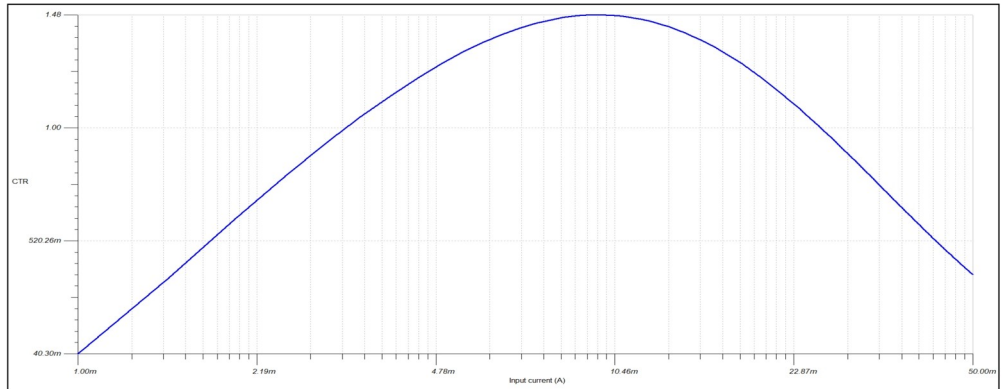
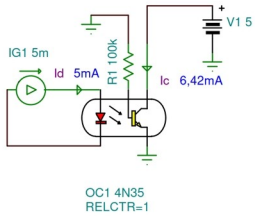
PC817 High Density Mounting Type Optocoupler Current Transfer Ratio vs. Forward Current



Collector Current vs. Collector-emitter Voltage



4N35 Optocoupler with Base Connection Current Transfer Ratio vs. Forward Current



Low-Voltage Thyristor

