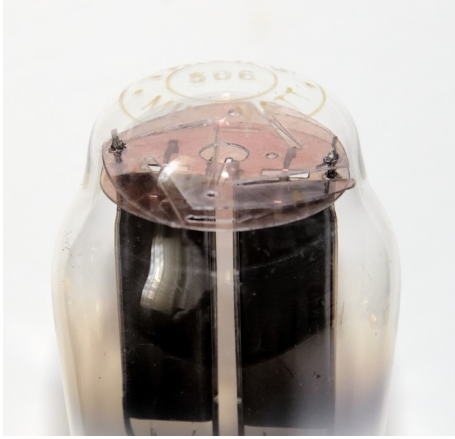


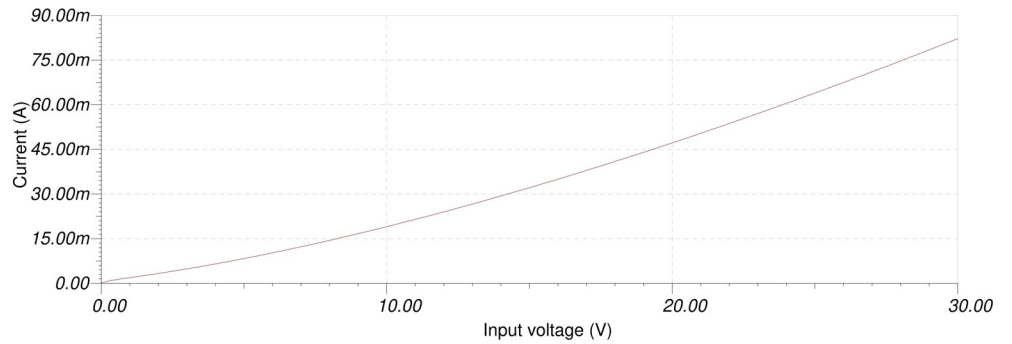
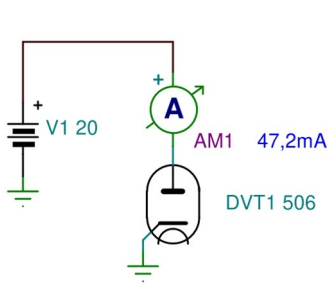
# Full-Wave Vacuum Rectifier Tube 506 Macro Model

Philips, Miniwatt 1927

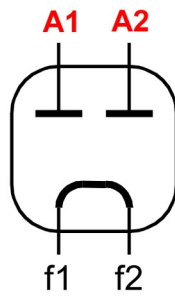
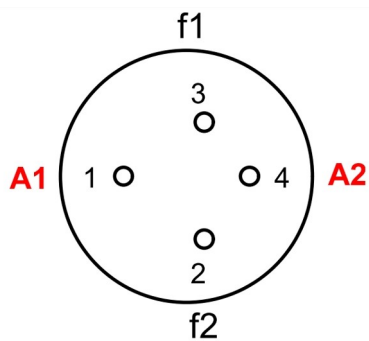
Operating Characteristics:  
( $U_f=4V$ ;  $I_f=1A$ )



(Two Diodes in Parallel)



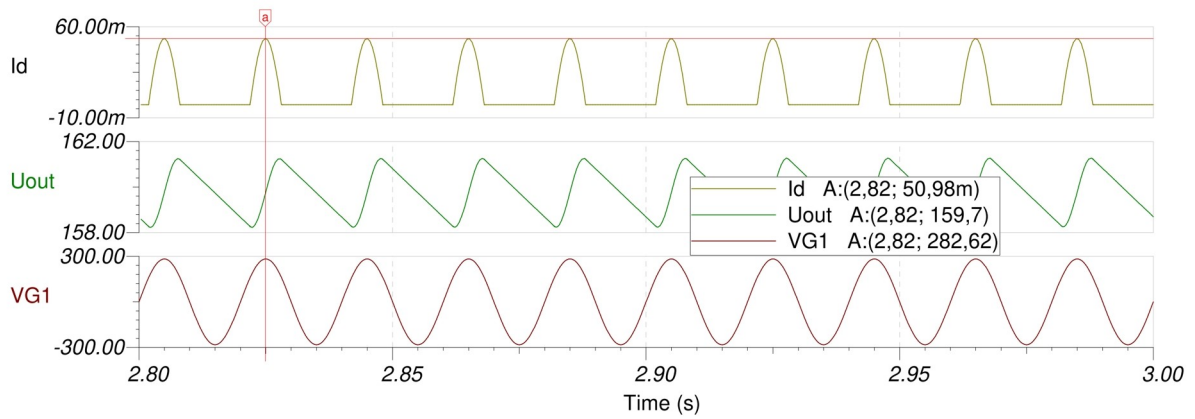
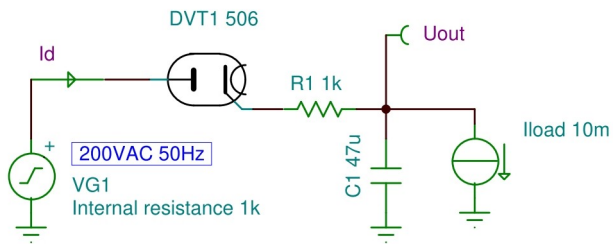
Base: Europe 4-Pin



$U_{max} = 2 \times 300V$

$I_{max} = 75mA$

## Half-Wave Rectifier



## Diode Splash Current

